

Fezziwig's Ball Attire

A Visual Guide

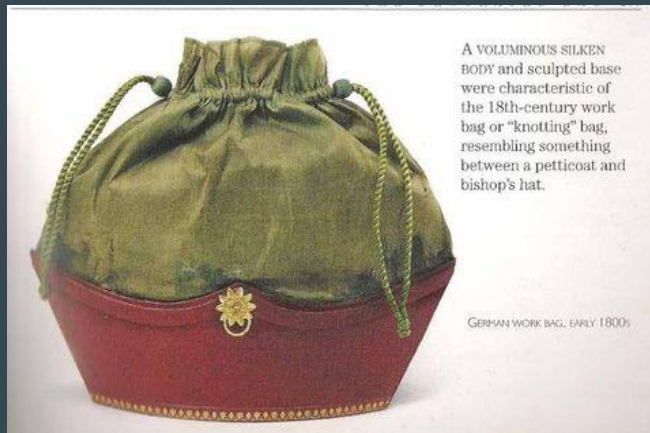


Friday, December 6, 2024
Vine Street Gym • 7:00pm-9:30 pm

REGENCY ERA CHARACTERS SET







A VOLUMINOUS SILKEN BODY and sculpted base were characteristic of the 18th-century work bag or "knotting" bag, resembling something between a petticoat and bishop's hat.

GERMAN WORK BAG, EARLY 1800s





regency dress



slippers



short stay



gown



pantaloettes



bonnet



gloves



stockings



corded corset



bodiced
petticoat



simple chemise

REGENCY ERA CHARACTERS SET



REGENCY

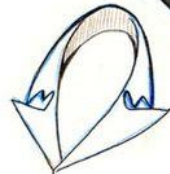
EVENNING DRESS (FULL DRESS)

TAILCOAT

BLACK WITH BLACK
BUTTONS OR
DARK BLUE WITH
GILT BUTTONS

DOUBLE OR
SINGLE BREASTED

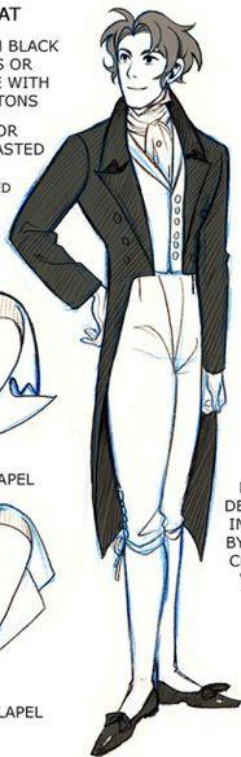
OPEN OR CLOSED
(ONLY OPEN
AFTER 1820)



M-NOTCH LAPEL



V-NOTCH LAPEL



WHITE GLOVES,
NEVER WORN
DURING SUPPER

FRONT CUT AWAY
FOR EASIER
HORSEBACK
RIDING



BACK
DIVIDED
IN HALF
BY LONG
CENTER
VENT

BUTTONS
AT THE
BACK

COAT TAILS VARY
IN SHAPE AND LENGTH

miyuki

BREECHES

WHITE,
BLACK OR
CASHMERE

BUCKLED,
LACED OR
BUTTONED



HIGH
WAIST
(UP TO
NAVAL)

SLIGHTLY
MORE
FORM-
FITTING

STRAP
UNDER
SHOES IN
DAY WEAR

(BOOTS WERE
DAY WEAR)

TIED WITH BROAD RIBBON

PANTALOONS

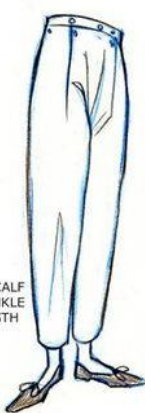
EVENTUALLY
INTERCHANGEABLE TERMS



PUMPS

LOW
HEELS

SPANISH LEATHER



MID-CALF
TO ANKLE
LENGTH

WHITE
STOCKINGS
(BLACK
BECAME
POPULAR
BY 1820)

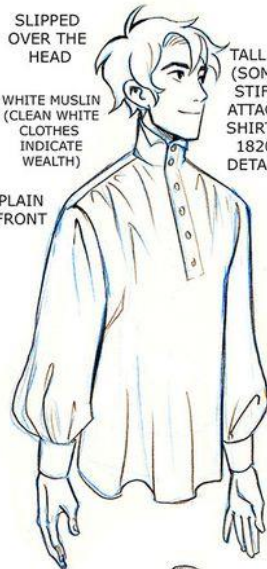
miyuki

DRESS SHIRT

SLIPPED
OVER THE
HEAD

WHITE MUSLIN
(CLEAN WHITE
CLOTHES
INDICATE
WEALTH)

PLAIN
FRONT



RUFFLED FRONT

WAISTCOAT

SINGLE
BREASTED

SHAWL OR
NOTCHED
LAPEL

UNDER-
WAISTCOAT
AFTER 1820

WHITE
OR
BLACK
(MORE
COLORS
AFTER
1820)



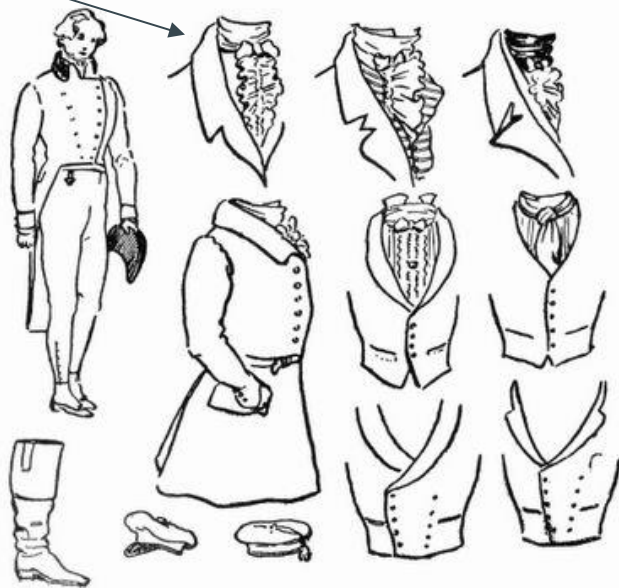
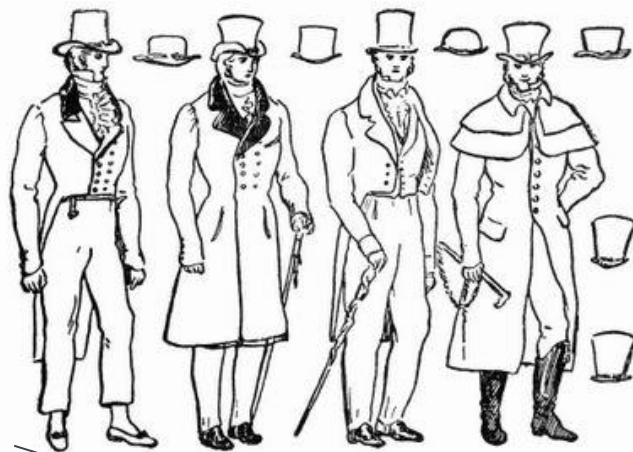
STRAIGHT



PLEATED FRONT

miyuki

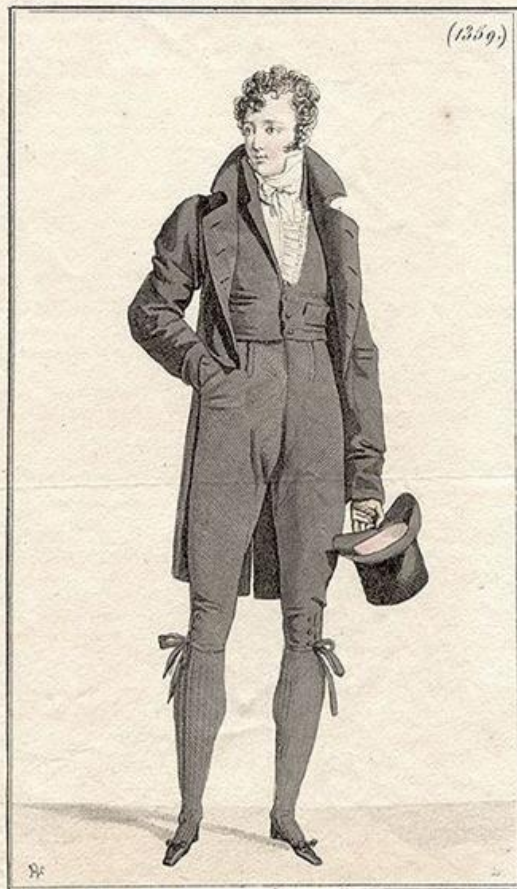
You can make this ruffle with a handkerchief.



1803.

Costume Parisien.

(1359)



Habit de D'ne. Gilet & Culote de Casimir. Bas à mailles croisés.

An 12.

Costume Parisien.

1803

(517)



Costume négligé d'un jeune homme.





NIPUNI